

Certificate No:	E05-ROLL-LFSH-254mm-PAR-02	Issued:	30/10/2018
------------------------	----------------------------	----------------	------------

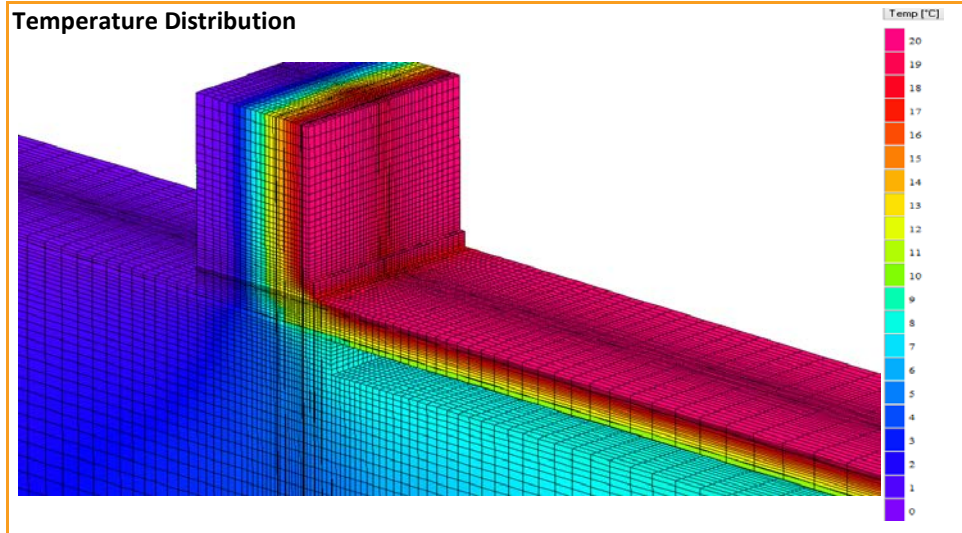
Issued to:
Adam Moles
Rollalong
Woolsbridge Indust Park
Three Legged Cross
Wimborne
Dorset
BH21 6SF
Tel: 01202 812510

Description of Junction Elements:

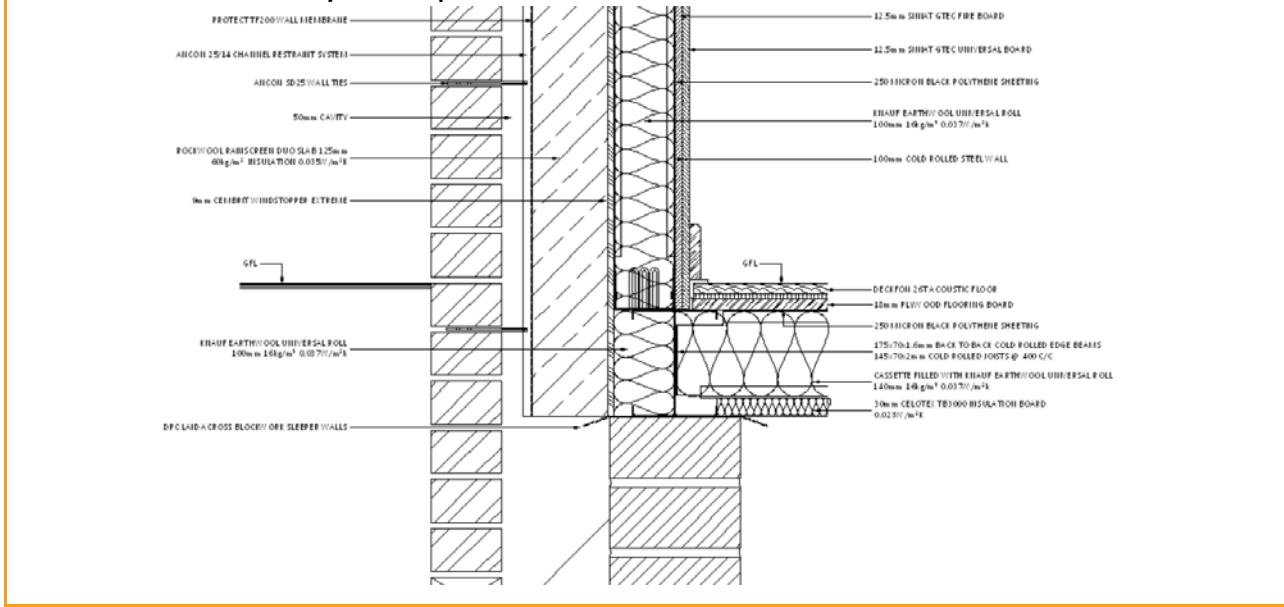
E05 - Ground floor (normal)
Wall: Light steel frame hybrid prefab wall; plasterboard, 100mm Stud at 600mm centers filled with wool $\lambda 0.037$, 125mm of wool $\lambda 0.035$, 50mm TF200 cavity, Brick
Floor: Light steel frame suspended floor; Deckfon 26T, 18mm plywood, 145mm steel beam at 400 centers filled with wool $\lambda 0.037$, 30mm Celotex TB3000, suspended floor

Calculation By:
Brandon Wipperfurth
Certification Body:
ACD Certification Ltd

Ψ and f are only valid for the detail drawn and described below



Detail to be followed to ratify thermal performance



Calculations Have Been Performed in Accordance With:
EN ISO 10211-2007 (British Standards)
IP 1/06 & BR497 (BRE Press)
and with reference to:
EN ISO 6946 (British Standards)
BR443 (BRE Press)
In dwellings, UK regulations stipulate that a temperature factor f that is >0.75 would avoid the risk of mould growth.

Linear Thermal Transmittance (W/mK)	
Ψ =	0.096
Temperature Factor for Humidity and Mould	
f =	0.838